

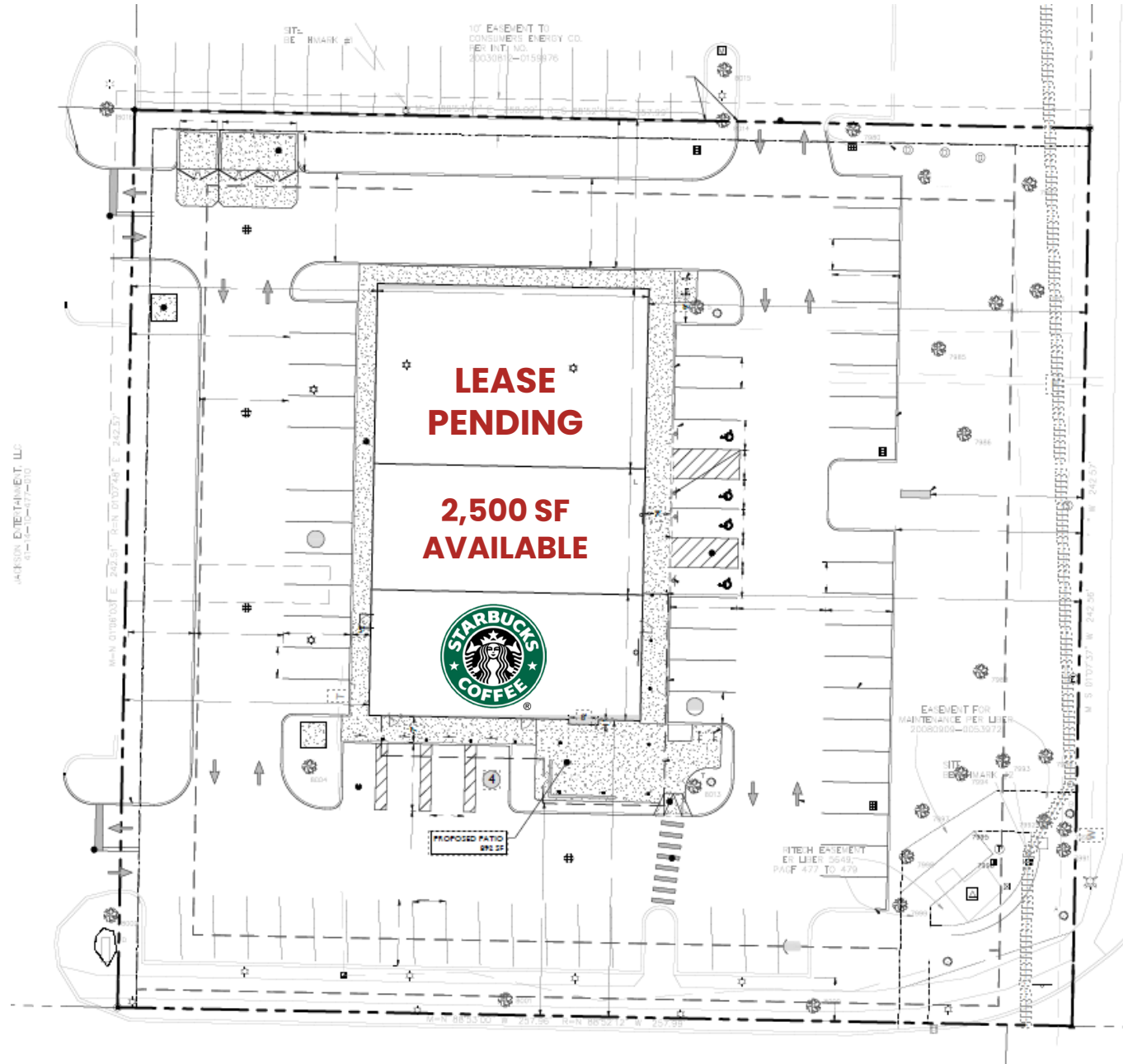
New Retail Development – Grand Rapids, MI

2135 E. Beltline Avenue,
Grand Rapids, MI 49525



Gabriel Schuchman | 248.646.9999 | gabe@alrigusa.com
Faith Fruciano | 248.983.5520 | faith@alrigusa.com

 ALRIG USA



New Retail Development – Grand Rapids, MI

2135 E. Beltline Avenue,
Grand Rapids, MI 49525



Gabriel Schuchman | 248.646.9999 | gabe@alrigusa.com
Faith Fruciano | 248.983.5520 | faith@alrigusa.com



New Retail Development – Grand Rapids, MI

Available for Lease

Property Address

2135 E. Beltline Avenue, Grand Rapids MI 49525

Property Highlights

- Join Starbucks in this new retail development located on East Beltline Avenue and Knapp Street, with **2,500 SF** available for lease.
- Opportunity for freestanding retailers, multi-tenant retail, restaurants, credit unions and fast casual eateries.
- Nearby retailers include Celebration Cinema, Meijer, T.J.Maxx, Aldi, Goodwill, Old Navy, The Melting Pot, Ulta, Panera and Orangetheory Fitness.
- Retail & Restaurant opportunities available

City Overview



Held every September, ArtPrize is an art competition and festival that spans 18 days, is free to public and the winner is awarded over \$400,000



The largest 25K race in the US is the Fifth Third Riverback Run and takes place in Grand Rapids every year






Frederik Meijer Gardens & Sculpture Park has two 24 Ft tall sculptures



Voted as “Beer City USA” Grand Rapids has over 40 Craft Breweries

Property Availability

2,500 SF available for lease

Demographics	1 Mile	3 Mile	5 Mile
 Population	4,425	47,802	156,274
 Households	1,714	19,441	63,723
 Average HH Income	\$172,190	\$106,956	\$103,896
 Daytime Employment	5,875	47,246	191,289

©ALRIG USA Inc. This information has been obtained from sources believed reliable. We have not verified it and make no guarantee, warranty or representation about it. Any projections, opinions, assumptions or estimates used are for example only and do not represent the current or future performance of the property. You and your advisors should conduct a careful, independent investigation of the property to determine to your satisfaction the suitability of the property for your needs. Photos herein are the property of their respective owners and use of these images without the express written consent of the owner is prohibited ALRIG USA and ALRIG USA logo are service marks of ALRIG USA and/or its affiliated or related companies in the United States and other countries. All other marks displayed on this document are the property of their respective OWNERS.